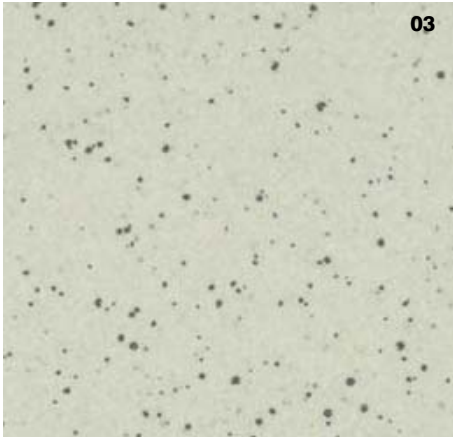




- DEDICATED PROFESSIONAL SUPPORT
- AN EXTENSIVE PORTFOLIO TO CHOOSE FROM
- FREE ONLINE INFORMATION RESOURCE
- QUICK & EFFICIENT SERVICE

PRODUCT INFORMATION

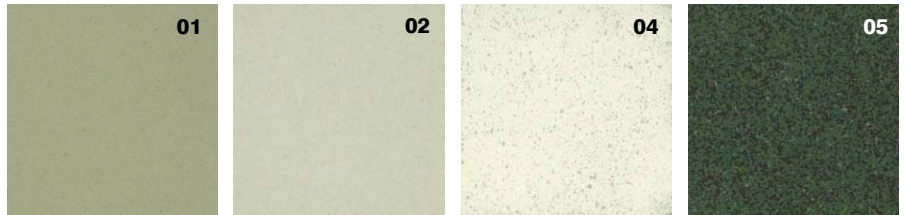
GRIP RANGE INFORMATION



Floor Tile: **GRIP COLOUR: 03**

Disclaimer: The various finishes and sizes shown are not necessarily available in all colours. For specific information on size, finish and colour availability, please contact a PROSPEC representative.

Colours Available



Sizes Available:

150x150mm, 200x200mm, 300x300mm

Finishes Available:

Natural (Matt) Finish: Slip Resistance Rating = R9

Textured Finish: Slip Resistance Rating = R11

Relief Finish: Slip Resistance Rating = R13



AT A GLANCE

Product Type

Unglazed Porcelain Stoneware

Finishes and Suitability

Finishes Available

Natural (Matt), Textured, Relief

Suitability

Interior/Exterior use for Walls & Floors

Areas of Use - Product Suitability

Domestic

Kitchens, bathrooms, conservatories, etc

YES

Residential

Hotels, housing, etc

YES

Public Areas - Light

Restaurants, offices, shops, etc

YES

Public Areas - Heavy

Shopping Centres, supermarkets

YES

Commercial

Airports, high density traffic areas, etc

YES

Industrial

Heavy Industrial Areas

YES



THE ESSENTIAL RESOURCE
FOR CONTRACT TILE
SPECIFICATION

For more information or to order a sample,
please call **0115 939 5903**

or visit www.prospectiles.com

TECHNICAL INFORMATION

(Abridged – for full results please contact us)

Slip Resistance

Natural (Matt) Finish: Slip Resistance Rating = R9
Structured Finish: Slip Resistance Rating = R11
Relief Finish: Slip Resistance Rating = R13

Surface Hardness

Natural (Matt) Finish: MoHs Rating = 7-8 (Conforms)
Structured Finish: MoHs Rating = 7-8 (Conforms)
Relief Finish: MoHs Rating = 7-8 (Conforms)

Water Absorption

All Finishes: Conforms (acc to test criteria) (Conforms)

Acid & Alkali Resistance

All Finishes: Resistant (acc to test criteria) (Conforms)

Thermal Shock Resistance

All Finishes: Resistant (acc to test criteria) (Conforms)

Frost Resistance

All Finishes: Resistant (acc to test criteria) (Conforms)

Deep Abrasion Resistance

All Finishes: (less than) <150mm³ (Conforms)

Bending Strength

All Finishes: 40 – 55 N/mm² (Conforms)

Breaking Load Index

All Finishes: Approx 500kg (12mm), 800kg (15mm)

TEST STANDARDS

DIN 51130

EN 101

EN 99

EN 106

EN 104

EN 202

EN 102

EN 100

N/A

GRIP SERIES

A comprehensive range for heavy-duty commercial and industrial projects. The range is available in three sizes and two thicknesses; 12 & 15mm. There are five colourways and three surface finishes providing an increasing level of slip resistance.

A range specifically designed for areas requiring exceptional slip resistance and technical properties, such as; resistance to frost, thermal shock, chemical attack, staining agents and mechanical wear.

A proven product range, with impressive references in areas such as; production areas and workshops, storage areas and warehousing, laboratories, manufacturing plants, etc.

A series of decorative/special pieces accompanies this range. Please enquire for details.



THE ESSENTIAL RESOURCE
FOR CONTRACT TILE
SPECIFICATION

For more information or to order a sample,
please call 0115 939 5903

or visit www.prospectiles.com