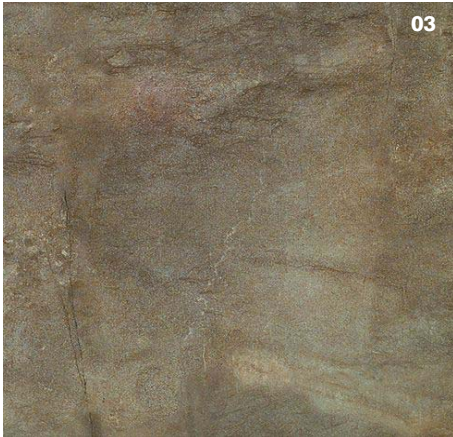




- DEDICATED PROFESSIONAL SUPPORT
- AN EXTENSIVE PORTFOLIO TO CHOOSE FROM
- FREE ONLINE INFORMATION RESOURCE
- QUICK & EFFICIENT SERVICE

## PRODUCT INFORMATION

### BARADA RANGE INFORMATION



Floor Tile: **BARADA COLOUR: 03**

Disclaimer: The various finishes and sizes shown are not necessarily available in all colours. For specific information on size, finish and colour availability, please contact a PROSPEC representative.

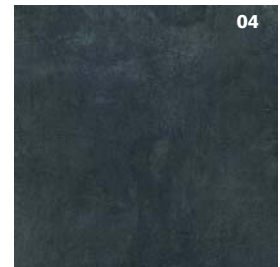
#### Colours Available



01



02

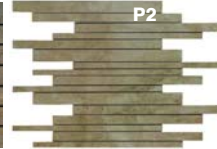


04

#### Mosaic Options



P1



P2



P3

#### Sizes Available:

70x590mm, 145x590mm, 294x294mm, 294x590mm, 320x990mm, 320x320mm, 330x330mm, 330x1000mm, 590x590mm, 590x1184mm, 602x602mm, 602x1200mm, various Mosaic

#### Finishes Available:

Matt Finish: Slip Resistance Rating = R9 (Guide Only)

### AT A GLANCE

#### Product Type

Glazed Porcelain Stoneware

#### Finishes and Suitability

##### Finishes Available

Matt

##### Suitability

Interior/Exterior use for Walls & Floors

#### Areas of Use - Product Suitability

##### Domestic

Kitchens, bathrooms, conservatories, etc

YES

##### Residential

Hotels, housing, etc

YES

##### Public Areas - Light

Restaurants, offices, shops, etc

YES

##### Public Areas - Heavy

Shopping Centres, supermarkets

NO

##### Commercial

Airports, high density traffic areas, etc

NO

##### Industrial

Heavy Industrial Areas

NO



THE ESSENTIAL RESOURCE  
FOR CONTRACT TILE  
SPECIFICATION

For more information or to order a sample,  
please call **0115 939 5903**

or visit [www.prospectiles.com](http://www.prospectiles.com)

## Slip Resistance

Matt Finish: Slip Resistance Rating = R9

## Resistance to Surface Abrasion

All Colours: PEI Rating = 4+

## Surface Hardness

All Colours: MoHs Rating = 5 (Conforms)

## Water Absorption

All Colours: Conforms (acc to test criteria) (Conforms)

## Acid & Alkali Resistance

All Colours: Results GLC (Acids, Alkalis) (Conforms)

All Colours: Results GB (Household) (Conforms)

## Frost Resistance

All Colours: Resistant (acc to test criteria) (Conforms)

## TEST STANDARDS

**NO TEST DATA**  
Lowest classification intended as a guide only

EN ISO 10545-07

EN 101

EN ISO 10545-03

EN ISO 10545-13

EN ISO 10545-12

## BARADA SERIES

A stunning range representing quality, style and innovation.

Available in four colourways demonstrating the look of stone, this series is suitable for a variety of projects.

An array of sizes; both rectified and non-rectified, with mosaic options provides for a highly flexible and stunning contemporary look.

For domestic, residential and light-duty public area environments.

A series of decorative/special pieces accompanies this range. Please enquire for details.



COLOUR: 03